

Ch 6 Test tomorrow

## 6.1 Ratio and Proportion

- Simplify
- must convert to same unit

$$\begin{aligned} &3 \angle s \text{ in } \triangle \\ &1:2:3 \\ &1x+2x+3x=180 \end{aligned}$$

## 6.2 Similar Polygons

- $\angle s \cong$
- Sides proportional
- solve for x

## 6.3 Similar Triangles

- AA~
- SSS~
- SAS~

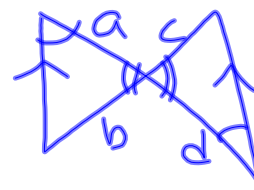
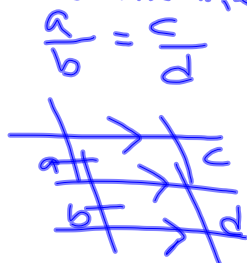
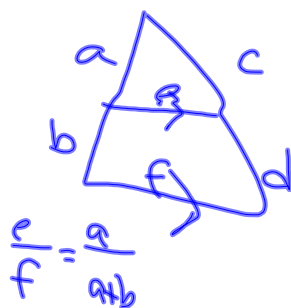
- shared  $\angle s$  (red.)  
- verticals

$$\frac{sm}{sm} = \frac{med}{med} = \frac{lg}{lg}$$

## 6.4 and 6.5

The rest of the proportions

Perimeters  
Medians  
 $\angle$  bisect, etc..



$$\frac{a}{d} = \frac{b}{c}$$

Review Assignment

p323 #s 7, 9

p333-336 #s 17, 22-26, 35  
(do not solve 26)

p337 #s 10-12

Answers will be posted on the wiki!  
Check them.